

FR-A700

Frequency Inverter

Top-class Drive Technology

Intelligent, flexible, powerful



Comprehensive functions to guarantee faster production cycles with outstanding speed constancy and dynamic performance



Many key components with 10-year design guarantee a long service life



Four overload ranges for easier product selection and greater flexibility

The New Drive For More Success



FR-A700: A comprehensive, high power line from 0.4 to 630 kW

The new FR-A700 frequency inverters combine innovative functions and reliable technology with maximum power, economy and flexibility. The FR-A700 is particularly well suited for demanding applications like cranes and lifting gear, high-bay warehousing systems, extruders, centrifuges and winding machines.

■ Precision without encoders

Even without encoders the FR-A700 continuously calculates the optimum magnetic flux for every operating state. A complex motor model and the specifications of the connected standard asynchronous motor are used to improve torque constancy across an extended speed range. For example, the system can generate torque of up to 200 % from a very low starting frequency of just 0.3 Hz. Known as real sensorless vector control (RSV), this new Mitsubishi Electric technology can even be used to regulate the torque. This now makes it possible to use inverters for many applications that were previously the exclusive domain of DC or closed-loop vector drives.

■ Ultra-precise speed and torque

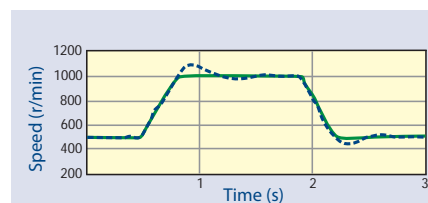
When operated with an encoder, the FR-A700 drives impress with ultra-precise speeds across the entire control range (precision $\pm 0.01\%$) and extremely exact torque control ($\pm 10\%$ precision and $\pm 5\%$ repeatability). This outstanding performance makes it possible to switch from simple servos to inexpensive frequency inverter systems.

■ Cost effective positioning

In combination with closed-loop vector control the FR-A700 inverters can also be used for positioning, with the control being realised via pulse train, digital inputs or network.

■ Autotuning

The optimum performance achieved in encoderless vector operation depends on precise motor data. This new generation of inverters has an autotuning function that can obtain all the necessary specifications from the motor in less than a minute, even when the motor is not running. You can store the data records for up to two motors. In addition to this, the online autotuning function automatically registers and compensates changes in the data during operation – for example, changes caused by temperature fluctuations.



Without Autotuning (blue graph) there are deviations from the set speed. Autotuning (green graph) significantly reduces any overshoot.

Another tuning system known as easy gain tuning simplifies the optimisation of the speed control. This system monitors the motor's speed response and automatically optimises the control parameters, eliminating the need for time-consuming manual adjustment and calibration.

Flexible Concept

■ Network capabilities

The FR-A700 has very extensive networking capabilities. It comes with both a USB port and a connection for Modbus-RTU as standard equipment. Support is also available for Profibus, CC-Link, CANopen and the SSCNET III motion control network.

■ Service-friendly

The service-friendly design keeps maintenance times short. Even replacing the entire inverter is a quick and simple operation, the terminal block is removable and can be plugged directly into the replacement unit.

The FR-A700 series has the same installation footprint as its predecessors.



Service-friendly details: Accessible fans that are easy to replace.

■ Self-diagnostics prevent downtime

This inverter actively monitors its own functions. For example, a pre-alarm is triggered automatically if the fan performance drops to 40 %. An internal program monitors the ageing of the main circuit capacitors and an operating hours counter makes it easy to plan the best time for servicing. System protection and overload functions like phase failure monitoring for both the input and output circuits help to ensure trouble-free operation.

More for Your Money

These new inverters have ample reserve capacity. For example, even at high frequencies and the high nominal temperature of 50 °C (in the ND and HD overload ranges) you still don't have to reduce the output of the FR-A700. This is made possible by the use of high-quality power stage modules.

An EMC filter is included as standard equipment for full compliance with the EN 61800-3 standard. The FR-A700 models for the range up to 22 kW have an integrated brake transistor and the models up to 7.5 kW have an internal brake resistor.

■ Long service life guaranteed

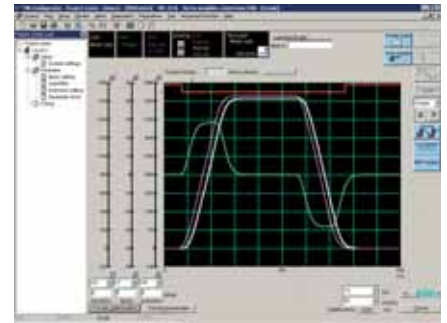
Mitsubishi Electric frequency inverter drives are known for their long service life, however the FR-A700 sets even higher standards in this area. Its key components are designed for a life of over 10 years. Among other things, this is achieved with heat-resistant high-performance capacitors and cooling fans with sealed bearings and special lubricants. The PCBs are also protected against aggressive environments with one or two layers of varnish.

■ Comprehensive PLC expertise

The integrated PLC functions of the FR-A700 series enable precise configuration for individual application needs. In addition to this, the inverter can even control simple applications itself without any support from other controllers. The PLC functions also provide access to the FR-A700's internal data registers and the states of its digital and analog I/Os. All the results of math calculations can be stored in the inverter's own EPROM memory, ensuring that the data is safeguarded against power failures. The internal PLC can be programmed with Mitsubishi Electric's user-friendly GX Developer programming software package.

■ User-friendly operation

Configuration and operation of the frequency inverter is simple. Setup is performed with the FR Configurator program, which can also download, store and document application data. Oscilloscope and machine analysis functions help the user to optimise the drive system. Data and settings from the predecessor series can be imported directly and converted for use in the new models.



The FR-A700's oscilloscope and machine analysis functions in operation.

The FR-DU07 configuration terminal with one-touch Digital Dial and 7-segment LED display provides manual access to all parameters and operating modes and is included as standard equipment. The optional FR-PU07 control terminal features a numeric keypad, plain text display in up to eight languages and enhanced features for storing up to three sets of data and transferring them to other frequency inverters. Getting started or upgrading to the new generation of frequency inverter drives could hardly be easier.

■ Four overload ranges

Many manufacturers of frequency inverter drives design their products for different overload modes, but seldom for more than two. The FR-A700 fully supports four overload ranges, which makes it very easy to select the right inverter for every application. For full details see the table overleaf.

Specifications ///

| Overload capacity | SLD (super light duty) | LD (light duty) | ND (normal duty) | HD (heavy duty) |
|---------------------|------------------------|-----------------|------------------|-----------------|
| 60 s overload | 110 % | 120 % | 150 % | 200 % |
| 3 s overload | 120 % | 150 % | 200 % | 250 % |
| Ambient temperature | 40 °C | 50 °C | 50 °C | 50 °C |

| Type | Rated current [A] | Rated motor capacity [kW] | Rated current [A] | Rated motor capacity [kW] | Rated current [A] * | Rated motor capacity [kW] * | Rated current [A] | Rated motor capacity [kW] | W x H x D (mm) |
|------------------|-------------------|---------------------------|-------------------|---------------------------|---------------------|-----------------------------|-------------------|---------------------------|------------------|
| FR-A740-00023-EC | 2.3 | 0.75 | 2.1 | 0.75 | 1.5 | 0.4 | 0.8 | 0.25 | 150 x 260 x 140 |
| FR-A740-00038-EC | 3.8 | 1.5 | 3.5 | 1.5 | 2.5 | 0.75 | 1.5 | 0.4 | |
| FR-A740-00052-EC | 5.2 | 2.2 | 4.8 | 2.2 | 4 | 1.5 | 2.5 | 0.75 | |
| FR-A740-00083-EC | 8.3 | 3.7 | 7.6 | 3.7 | 6 | 2.2 | 4 | 1.5 | |
| FR-A740-00126-EC | 12.6 | 5.5 | 11.5 | 5.5 | 9 | 3.7 | 6 | 2.2 | |
| FR-A740-00170-EC | 17 | 7.5 | 16 | 7.5 | 12 | 5.5 | 9 | 3.7 | 220 x 260 x 170 |
| FR-A740-00250-EC | 25 | 11 | 23 | 11 | 17 | 7.5 | 12 | 5.5 | |
| FR-A740-00310-EC | 31 | 15 | 29 | 15 | 23 | 11 | 17 | 7.5 | 220 x 300 x 190 |
| FR-A740-00380-EC | 38 | 18.5 | 35 | 18.5 | 31 | 15 | 23 | 11 | |
| FR-A740-00470-EC | 47 | 22 | 43 | 22 | 38 | 18.5 | 31 | 15 | 220 x 400 x 195 |
| FR-A740-00620-EC | 62 | 30 | 57 | 30 | 44 | 22 | 38 | 18.5 | |
| FR-A740-00770-EC | 77 | 37 | 70 | 37 | 57 | 30 | 44 | 22 | 325 x 550 x 195 |
| FR-A740-00930-EC | 93 | 45 | 85 | 45 | 71 | 37 | 57 | 30 | |
| FR-A740-01160-EC | 116 | 55 | 106 | 55 | 86 | 45 | 71 | 37 | 435 x 550 x 250 |
| FR-A740-01800-EC | 180 | 90 | 144 | 75 | 110 | 55 | 86 | 45 | |
| FR-A740-02160-EC | 216 | 110 | 180 | 90 | 144 | 75 | 110 | 55 | 465 x 620 x 300 |
| FR-A740-02600-EC | 260 | 132 | 216 | 110 | 180 | 90 | 144 | 75 | |
| FR-A740-03250-EC | 325 | 160 | 260 | 132 | 216 | 110 | 180 | 90 | 465 x 740 x 360 |
| FR-A740-03610-EC | 361 | 185 | 325 | 160 | 260 | 132 | 216 | 110 | |
| FR-A740-04320-EC | 432 | 220 | 361 | 185 | 325 | 160 | 260 | 132 | 498 x 1010 x 380 |
| FR-A740-04810-EC | 481 | 150 | 432 | 220 | 361 | 185 | 325 | 160 | |
| FR-A740-05470-EC | 547 | 280 | 481 | 250 | 432 | 220 | 361 | 185 | 680 x 1010 x 380 |
| FR-A740-06100-EC | 610 | 315 | 547 | 280 | 481 | 250 | 432 | 220 | |
| FR-A740-06830-EC | 683 | 355 | 610 | 315 | 547 | 280 | 481 | 250 | 790 x 1330 x 440 |
| FR-A740-07700-EC | 770 | 400 | 683 | 355 | 610 | 315 | 547 | 280 | |
| FR-A740-08660-EC | 866 | 450 | 770 | 400 | 683 | 355 | 610 | 315 | 995 x 1580 x 440 |
| FR-A740-09620-EC | 962 | 500 | 866 | 450 | 770 | 400 | 683 | 355 | |
| FR-A740-10940-EC | 1094 | 560 | 962 | 500 | 866 | 450 | 770 | 400 | |
| FR-A740-12120-EC | 1212 | 630 | 1094 | 560 | 962 | 500 | 866 | 450 | |

* Standard operation/initial value

| Operating conditions | Specifications |
|----------------------|---|
| Voltage | Three-phase, 380 – 480 or 500 V (-15 %/+10 %) |
| Ambient temperature | -10 °C to +50 °C (non-freezing) |
| Storage temperature | -20 °C to +65 °C |
| Ambient humidity | Maximum 90 % relative humidity (non-condensing) |
| Altitude | Maximum 1000 m above sea level |

| Operating conditions | Specifications |
|----------------------|--|
| Protection rating | IP20 up to 22 kW, IP00 from 30 kW |
| Shock resistance | 10 G (for 00023 to 03610); 3 G (for ≤ 04320) |
| Vibration resistance | Maximum 0.6 G |
| Certifications | CE/UL/cUL/GOST |

EUROPEAN BRANCHES

| | |
|---|----------------|
| MITSUBISHI ELECTRIC EUROPE B.V. 25, Boulevard des Bouvets F-92741 Nanterre Cedex Phone: +33 (0)1 55 68 55 68 | FRANCE |
| MITSUBISHI ELECTRIC EUROPE B.V. Gothaer Straße 8 D-40880 Ratingen Phone: +49 (0)2102 / 486-0 | GERMANY |
| MITSUBISHI ELECTRIC EUROPE B.V. Westgate Business Park, Ballymount IRL-Dublin 24 Phone: +353 (0)1 419 88 00 | IRELAND |
| MITSUBISHI ELECTRIC EUROPE B.V. Viale Colleoni 7 I-20041 Agrate Brianza (MI) Phone: +39 039 / 60 53 1 | ITALY |
| MITSUBISHI ELECTRIC EUROPE B.V. Carretera de Rubi 76-80 E-08190 Sant Cugat del Vallés (Barcelona) Phone: +34 93 / 565 3131 | SPAIN |
| MITSUBISHI ELECTRIC EUROPE B.V. Travellers Lane UK-Hatfield, Herts. AL10 8XB Phone: +44 (0)1707 / 27 61 00 | UK |

EUROPEAN REPRESENTATIVES

| | | | | | | | | | | | |
|---|-----------------------|---|-----------------------|--|--------------------|---|---------------|---|-----------------|--|---------------------|
| GEVA Wiener Straße 89 AT-2500 Baden Phone: +43 (0)2252 / 85 55 20 | AUSTRIA | B.TECH, a.s. U Borové 69 CZ-58001 Havlíčkův Brod Phone: +420 (0)569 777 777 | CZECH REPUBLIC | Kazpromautomatiks Ltd. KAZAKHSTAN 2, Sádskaya str. KAZ-470046 Karaganda Phone: +7 3212 / 50 11 50 | POLAND | MPL Technology Sp. z o.o. Ul. Krakowska 50 PL-32-083 Balice Phone: +48 (0)12 / 630 47 00 | POLAND | SIRIUS Trading & Services srl Aleea Lacul Morii Nr. 3 RO-060841 Bucuresti, Sector 6 Phone: +40 (0)21 / 430 40 06 | ROMANIA | Beijer Electronics AB Box 426 SE-20124 Malmö Phone: +46 (0)40 / 35 86 00 | SWEDEN |
| TEHNIKON Oktyabrskaya 16/5, Off. 703-711 BY-220030 Minsk Phone: +375 (0)17 / 210 46 26 | BELARUS | Beijer Electronics A/S LYKKEGÅRDSVEJ 17, 1. DK-4000 ROSKILDE Phone: +45 (0)46 / 75 56 26 | DENMARK | Beijer Electronics SIA Vestienas iela 2 LV-1035 Riga Phone: +371 (0)784 / 2280 | LATVIA | CONSYS Promyshlennaya st. 42 RU-190099 St. Petersburg Phone: +7 812 / 325 36 53 | RUSSIA | CRAFT C. & E. d.o.o. Bulevar Svetog Cara Konstantina 80-86 SR-18106 Nis Phone: +381 (0)18 / 292-24-4/5, 523 962 | SERBIA | ECONOTEC AG Hinterdorfstr. 12 CH-8309 Nürensdorf Phone: +41 (0)44 / 838 48 11 | SWITZERLAND |
| Koning & Hartman B.V. Woluwelaan 31 BE-1800 Vilvoorde Phone: +32 (0)2 / 257 02 40 | BELGIUM | Beijer Electronics OÜ Pärnu mnt. 160i EE-11317 Tallinn Phone: +372 (0)6 / 51 81 40 | ESTONIA | Beijer Electronics UAB Savanoriu Pr. 187 LT-02300 Vilnius Phone: +370 (0)5 / 232 3101 | LITHUANIA | ELECTROTECHNICAL SYSTEMS Derbenevskaya st. 11A, Office 69 RU-115114 Moscow Phone: +7 495 / 744 55 54 | RUSSIA | INEA SR D.O.O. Karadjordjeva 12/260 SER-113000 Smederevo Phone: +381 (0)16 / 617 163 | SERBIA | GTS Darulaceze Cad. No. 43 KAT. 2 TR-34384 Okmeydanı-Istanbul Phone: +90 (0)212 / 320 1640 | TURKEY |
| AKHNATON 4 Andrej Ljapchev Blvd. Pb 21 BG-1756 Sofia Phone: +359 (0)2 / 817 6004 | BULGARIA | Beijer Electronics OY Jaakonkatu 2 FIN-01620 Vantaa Phone: +358 (0)207 / 463 500 | FINLAND | INTEHISIS srl bid. Traian 23/1 MD-2060 Kishinev Phone: +373 (0)22 / 66 4242 | MOLDOVA | ELEKTROSTILY Rubzovskaja nab. 4-3, No. 8 RU-105082 Moscow Phone: +7 495 / 545 3419 | RUSSIA | AutoCont Control s.r.o. Radlinského 47 SK - 02601 Dolny Kubin Phone: +421 (0)43 / 5868210 | SLOVAKIA | CSC AUTOMATION Ltd. 15, M. Raskova St., Fl. 10, Office 1010 UA-02002 Kiev Phone: +380 (0)44 / 494 33 55 | UKRAINE |
| INEA CR d.o.o. Losinjka 4 HR-10000 Zagreb Phone: +385 (0)1 / 36 940-01 / -02 / -03 | CROATIA | UTEKO A.B.E.E. 5, Mavrogenou Str. GR-18542 Piraeus Phone: +30 211 / 1206 900 | GREECE | Koning & Hartman B.V. Haarlerbergweg 21-23 NL-1101 CH Amsterdam Phone: +31 (0)20 / 587 76 00 | NETHERLANDS | RPS-AUTOMATIKA BUDENNOVSKY 97, Office 311 RU-344007 Rostov on Don Phone: +7 8632 / 22 63 72 | RUSSIA | CS MTrade Slovensko, s.r.o. Vajanskeho 58 SK - 92101 Piestany Phone: +421 (0)33 / 7742 760 | SLOVAKIA | SHERF MOTION TECHN. Ltd. Rehov Hamerkava 19 IL-58851 Holon Phone: +972 (0)3 / 559 54 62 | ISRAEL |
| AUTOCONT C.S., s.r.o. Technologicka 374/6 CZ-708 00 Ostrava Pustkovec Phone: +420 (0)59 / 5691 150 | CZECH REPUBLIC | MELTRADE Ltd. Fertő utca 14. HU-1107 Budapest Phone: +36 (0)1 / 431-9726 | HUNGARY | Beijer Electronics AS Postboks 487 NO-3002 Drammen Phone: +47 (0)32 / 24 30 00 | NORWAY | STC DRIVE TECHNIQUE Poslanikov per. 9, str 1 RU-105005 Moscow Phone: +7 495 / 790 72 10 | RUSSIA | INEA d.o.o. Stegne 11 SI-1000 Ljubljana Phone: +386 (0)1 / 513 8100 | SLOVENIA | CSI Ltd. Private Bag 2016 ZA-1600 Isando Phone: +27 (0)11 / 928 2000 | SOUTH AFRICA |



Mitsubishi Electric Europe B.V. /// FA - European Business Group /// Gothaer Straße 8 /// D-40880 Ratingen /// Germany
Tel.: +49(0)2102-4860 /// Fax: +49(0)2102-4861 120 /// info@mitsubishi-automation.com /// www.mitsubishi-automation.com

Specifications subject to change /// Art. no. 193396-A /// 06.2008

All trademarks and copyrights acknowledged.